

# Waveguide to K Type Coax Adaptors

## Series 093-KF/KM and 094-KF

### Features

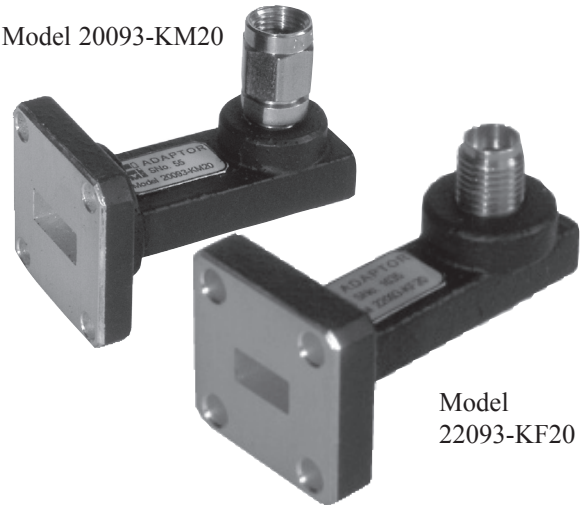
- **Low VSWR**
- **Models up to 40 GHz**
- **Manufactured from Brass or \*Aluminium**

The new Series 093-KF/KM and 094-KF range of Waveguide to Coax Adaptors feature an improved mechanical design offering greater durability and reliability. Minor dimensional changes may have been incorporated; please contact our Sales Team for further information if available space is limited.

Adaptors in this range are fitted with Precision 'K' type connectors and are available for frequency ranges up to 40 GHz. Narrowband models, specifically optimised and offering reduced VSWR, are also available.

Male and Female connectors are offered, see table below for full details.

Model 20093-KM20



Model  
22093-KF20

| Model        | Frequency Range (GHz) | Waveguide |     |    | VSWR (better than) | *Dimensions (Brass) |      |      |
|--------------|-----------------------|-----------|-----|----|--------------------|---------------------|------|------|
|              |                       | WG        | R   | WR |                    | A                   | B    | C    |
| 18094-KF20   | 11.9 - 18.0           | 18        | 140 | 62 | 1.10               | 37.1                | 45.5 | 17.9 |
| 18093-KF20   | 11.9 - 18.0           | 18        | 140 | 62 | 1.12               | 37.1                | 45.5 | 17.9 |
| 19094-KF20   | 14.5 - 22.0           | 19        | 180 | 51 | 1.10               | 36.3                | 45.5 | 17.0 |
| 19093-KF20   | 14.5 - 22.0           | 19        | 180 | 51 | 1.20               | 36.3                | 45.5 | 17.0 |
| 19093-KM20   | 14.5 - 22.0           | 19        | 180 | 51 | 1.20               | 36.3                | 45.5 | 19.4 |
| 19093-KF21   | 20.2 - 20.8           | 19        | 180 | 51 | 1.05               | 36.3                | 45.5 | 19.4 |
| 20094-KF20   | 17.6 - 26.7           | 20        | 220 | 42 | 1.10               | 28.6                | 37.0 | 16.1 |
| 20093-KF20   | 17.6 - 26.7           | 20        | 220 | 42 | 1.20               | 28.6                | 37.0 | 16.1 |
| 20093-KM20   | 17.6 - 26.7           | 20        | 220 | 42 | 1.20               | 28.6                | 37.0 | 19.3 |
| 20093-KF21   | 21.2 - 23.6           | 20        | 220 | 42 | 1.10               | 28.6                | 37.0 | 16.1 |
| 20093-KM21   | 21.2 - 23.6           | 20        | 220 | 42 | 1.10               | 28.6                | 37.0 | 19.3 |
| 20093-KM23   | 23.0 - 24.0           | 20        | 220 | 42 | 1.10               | 28.6                | 37.0 | 19.3 |
| 21094-KF20   | 21.7 - 33.0           | 21        | 260 | 34 | 1.15               | 28.7                | 37.0 | 16.1 |
| 21093-KF20   | 21.7 - 33.0           | 21        | 260 | 34 | 1.25               | 28.7                | 37.0 | 16.1 |
| 21093-KM20   | 21.7 - 33.0           | 21        | 260 | 34 | 1.25               | 28.7                | 37.0 | 18.8 |
| 21093-KF22   | 24.5 - 27.0           | 21        | 260 | 34 | 1.10               | 28.7                | 37.0 | 16.1 |
| 22094-KF20   | 26.4 - 40.1           | 22        | 320 | 28 | 1.15               | 28.4                | 36.5 | 15.7 |
| 22093-KF20   | 26.4 - 40.1           | 22        | 320 | 28 | 1.20               | 28.4                | 36.5 | 15.7 |
| 22093-KM20   | 26.4 - 40.1           | 22        | 320 | 28 | 1.20               | 28.4                | 36.5 | 17.9 |
| 22093-KF22   | 37.0 - 39.5           | 22        | 320 | 28 | 1.10               | 28.4                | 36.5 | 15.7 |
| 22093-KF23   | 27.0 - 29.5           | 22        | 320 | 28 | 1.10               | 28.4                | 36.5 | 15.7 |
| 22093-KF24** | 40.5 - 42.5           | 22        | 320 | 28 | 1.30               | 28.4                | 36.5 | 15.7 |
| 22093-KF25   | 28.0 - 32.0           | 22        | 320 | 28 | 1.15               | 28.4                | 36.5 | 15.7 |
| 22093-KF26   | 33.0 - 35.0           | 22        | 320 | 28 | 1.10               | 28.4                | 36.5 | 15.7 |
| 22093-KF27   | 28.0 - 31.0           | 22        | 320 | 28 | 1.10               | 28.4                | 36.5 | 15.7 |
| 22093-KM21   | 28.0 - 28.7           | 22        | 320 | 28 | 1.15               | 28.4                | 36.5 | 15.7 |
| 22093-KM22   | 37.0 - 39.5           | 22        | 320 | 28 | 1.10               | 28.4                | 36.5 | 15.7 |
| 22093-KM23   | 27.0 - 29.0           | 22        | 320 | 28 | 1.10               | 28.4                | 36.5 | 15.7 |
| 22093-KM24   | 40.5 - 42.5           | 22        | 320 | 28 | 1.30               | 28.4                | 36.5 | 15.7 |
| 22093-KM25   | 28.0 - 32.0           | 22        | 320 | 28 | 1.15               | 28.4                | 36.5 | 15.7 |
| 22093-KM26   | 33.0 - 35.0           | 22        | 320 | 28 | 1.10               | 28.4                | 36.5 | 15.7 |

### ORDERING INFORMATION

#### Adaptor, Waveguide to Coax, Precision K Female

Model: Frequency band and adaptor type suffix; Description

Example: Model 22094-KF20 Waveguide to K type female coax adaptor (Frequency Range 26.4 GHz to 40.1 GHz, VSWR 1.15)

#### Adaptor, Waveguide to Coax, Precision K Male

Model: Frequency band and adaptor type suffix; Description

Example: Model 20093-KM20 Waveguide to K Type male coax adaptor (Frequency Range 17.6 GHz to 26.7 GHz, VSWR 1.20)

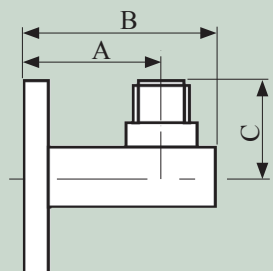
**Models optimised for narrowband applications are also available - details on request.**

If the adaptor is required to be manufactured in aluminium please suffix the order information with \AL

Example: Model 20093-KM20\AL

\*Note The dimensions of aluminium adaptors may vary from those manufactured in brass.

\*\*Note This adaptor is a special model optimised for use outside the frequency band.



Series 093-KF/KM 094-KF

For standard flange types and recommendations see pages 118 onwards