

Waveguide to SMA Coax Adaptors

Series 094-SF40

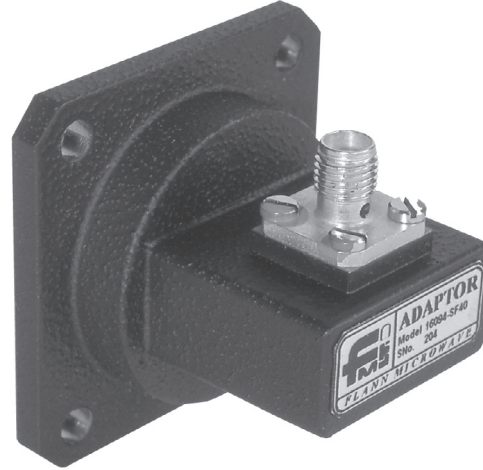
Features

- **Very Low VSWR**
- **Full Waveguide Band models**
- **Manufactured from Brass or *Aluminium**

The Flann Series 094-SF waveguide to coax adaptors offer enhanced VSWR performance over the full waveguide frequency band.

The adaptors are fitted with SMA Female connectors as standard. However, models are optionally available with male connectors, please contact our sales team for further details.

Narrowband models covering typically 20% of the full waveguide band with a VSWR of 1.05 are also available. Please see Series 094-SF** for details.



Model 16094-SF40

Model	Frequency Range (GHz)	Waveguide			VSWR (better than)	*Dimensions (Brass)		
		WG	R	WR		A	B	C
11A094-SF40	3.3 - 4.9	11A	40	229	1.15	51.5	72.3	59.0
12094-SF40	3.94 - 5.99	12	48	187	1.15	60.2	78.5	24.5
13094-SF40	4.64 - 7.05	13	58	159	1.15	32.6	46.5	22.8
14094-SF40	5.38 - 8.18	14	70	137	1.15	35.8	46.5	21.4
15094-SF40	6.58 - 10.0	15	84	112	1.12	37.5	48.5	19.8
16094-SF40	8.2 - 12.5	16	100	90	1.12	34.5	45.3	17.9
17094-SF40	9.84 - 15.0	17	120	75	1.12	26.2	34.5	17.1
18094-SF40	11.9 - 18.0	18	140	62	1.12	38.5	47.3	17.0
19094-SF40	14.5 - 22.0	19	180	51	1.20	27.3	34.5	16.4
20094-SF40	17.6 - 26.7	20	220	42	1.20	21.5	27.9	15.1

ORDERING INFORMATION

Model: description

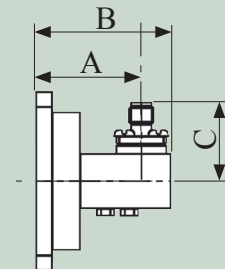
Example: Model 18094-SF40 waveguide to SMA female coax adaptor

If the adaptor is required to be manufactured in aluminium please suffix the order information with \AL

Example: Model 18094-SF40\AL

Note: models with suffix SF40 are full band units. Please see page 58 for narrowband models.

*Note The dimensions of aluminium adaptors may vary from those manufactured in brass.



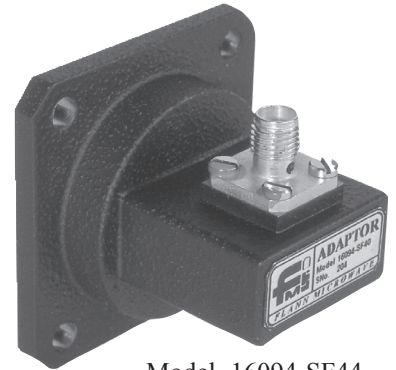
Series 094-SF

For standard flange types and recommendations see pages 118 onwards

Narrow Band Waveguide to SMA Coax Adaptors Series 094-SF**

Features

- **Very Low VSWR**
- **Alternative Narrowband Models on Request**
- **Brass or *Aluminium models available**

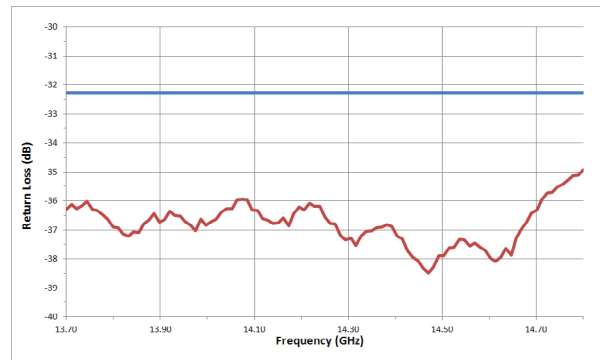


Model 16094-SF44

For some applications, where full waveguide band operation is not essential, it might be desirable to opt for an optimised VSWR performance over a narrow band. For such applications Flann are able to offer narrow band models with a typical VSWR of better than 1.05 depending on waveguide size and operating frequency range. Please contact our Sales Office in the first instance for assistance to identify the most suitable model for your requirement.

Models are available fitted with either Male or Female SMA connector.

Narrow band models fitted with Type N connectors are also available. Please see Series 094-NF** for details.



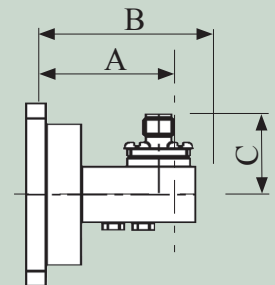
Typical Return Loss for Model 17094-SF48

ORDERING INFORMATION

Model: frequency band suffix; description

Example: Model 17094-SF44 Narrow Band waveguide to SMA coax adaptor (frequency range 14.00 GHz to 14.50 GHz VSWR 1.05 max)

*Note The dimensions of aluminium adaptors may vary from those manufactured in brass.



For dimensions please see 094-SF40

Series 094-SF**

For standard flange types and recommendations see pages 118 onwards