

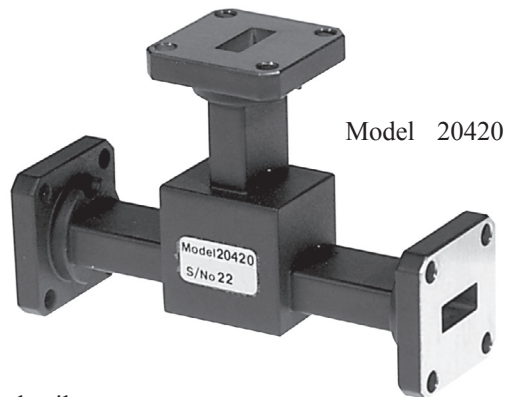
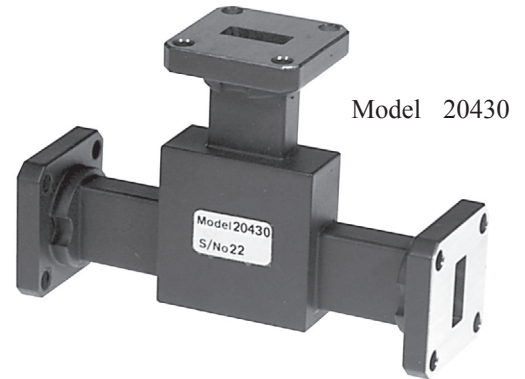
Un-matched E and H Plane Tees

Series 420 / 430

Features

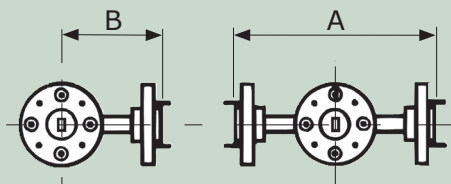
- Models from 1.14 GHz to 140 GHz
- E Plane Models - Series 420
- H Plane Models - Series 430

The tees are manufactured from sections of standard waveguide precisely assembled to produce excellent dimensional symmetry ensuring good power division characteristics. Outputs from H plane tees are in phase whereas E plane tees outputs are of opposite phase.



Un-matched tees are available in lower frequency bands; details on request.

Model		Frequency Range (GHz)	Waveguide			Dimensions (mm)	
E Plane	H Plane		WG	R	WR	A	B
20420	20430	17.6 - 26.7	20	220	42	70	35
22420	22430	26.4 - 40.1	22	320	28	70	35
23420	23430	33.0 - 50.1	23	400	22	70	35
24420	24430	39.3 - 59.7	24	500	19	70	35
25420	25430	49.9 - 75.8	25	620	15	48	24
26420	26430	60.5 - 92.0	26	740	12	48	24
27420	27430	73.8 - 112	27	900	10	48	24
28420	28430	92.3 - 140	28	1200	8	48	24



ORDERING INFORMATION

Model: Description

Example: Model 27420 Tee, Un-matched, E Plane

For standard flange types and recommendations see pages 118 onwards