

Waveguide to Coax Adaptors Model Selection

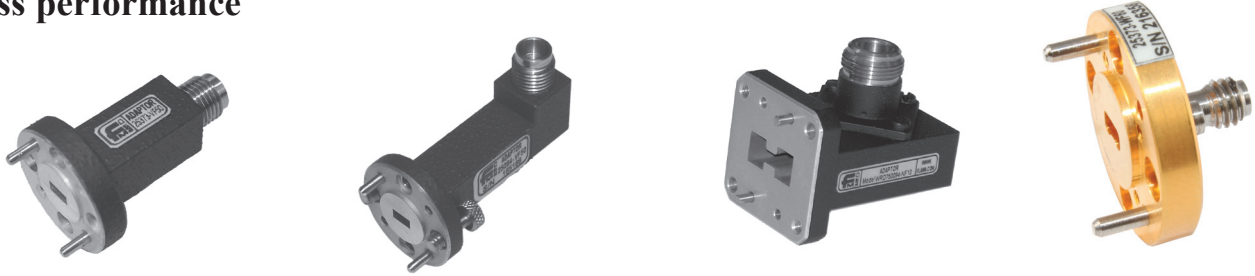
Models 750 MHz to 173 GHz

Male (Plug) and Female (Jack) variants available

Brass, Copper & Aluminium Options

Standard & Special Flange Styles

Narrow-band versions available with further improved return loss performance



Connector	Full Band - 90 degree	High Power - 90 degree	Low PIM - 90 degree
7/16 DIN		097-DF10	098-DF
N	093-NF10 & 094-NF10	097-NF10	098-NF10
SMA	094-SF40		
K (2.9mm)	093-KF20 & 094-KF20	097-KF20	098-KF10
APC7	093-AP70 096-AP70		
2.4mm	093-TF30	097-TF	098-TF
V(1.85mm)	093-VF50 & 093-VF50	097-VF	098-VF
1.00mm	093-WF60	097-WF	
0.8mm	093-FF60	097-FF	

Connector	Full Band - End Launch	High Power - End Launch	Low PIM - End Launch
7/16 DIN	373-DF10	377-DF10	378-DF
N	373-NF10	377-NF10	378-NF
SMA			
K (2.9mm)	373-KF20	377-KF20	378-KF20
APC7	373-AP		
2.4mm	373-TF	377-TF	378-TF
V(1.85mm)	373-VF50	377-VF50	378-VF50
1.00mm	373-WF60	377-WF60	
0.88mm	373-FF60	377-FF60	

**Other connector types are also available including: Cable Direct Entry
Special & Customised**