

Double Ridge Waveguide to Coax Adaptors

Series WRD093

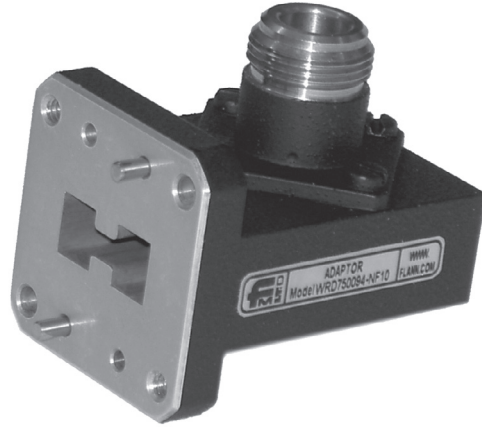
Features

- **1.25:1 VSWR Fullband**
- **Narrow Band Versions Available**
- **Models up to 40GHz**
- **Female & Male Coax Connectors**

We are proud to include in our latest catalogue, our new series of WRD waveguide to coax adaptors which have been designed to give high durability and reliability.

Adaptors can be fitted with SMA, APC7 and N type connectors for use up to 18 GHz, K connectors are fitted to the WRD 180 units covering the 18 GHz to 40 GHz band.

Narrowband models, specifically optimised can be manufactured on request.



Model	Frequency Range GHz	Waveguide Size	Connector Options	Waveguide Flange	Fullband VSWR Max
WRD200093-SF40	2.0-4.8	WRD-200D24	SMA	WRD200C1	1.25
WRD350093-SF40	3.5-8.2	WRD-350D24	SMA	WRD350C1	1.25
WRD475093-SF40	4.75-11.0	WRD-475D24	SMA	WRD475C1	1.25
WRD580093-SF40	5.8-16.0	WRD-580D28	SMA	WRD580C1	1.25
WRD650093-SF40	6.5-18.0	WRD-650D28	SMA	WRD650C1	1.25
WRD750093-SF40	7.5-18.0	WRD-750D24	SMA	WRD750C1	1.25
WRD200093-AP70	2.0-4.8	WRD-200D24	APC	WRD200C1	1.25
WRD350093-AP70	3.5-8.2	WRD-350D24	APC	WRD350C1	1.25
WRD475093-AP70	4.75-11.0	WRD-475D24	APC	WRD475C1	1.25
WRD580093-AP70	5.8-16.0	WRD-580D28	APC	WRD580C1	1.25
WRD650093-AP70	6.5-18.0	WRD-650D28	APC	WRD650C1	1.25
WRD750093-AP70	7.5-18.0	WRD-750D24	APC	WRD750C1	1.25
WRD200093-NF10	2.0-4.8	WRD-200D24	N	WRD200C1	1.25
WRD350093-NF10	3.5-8.2	WRD-350D24	N	WRD350C1	1.25
WRD475093-NF10	4.75-11.0	WRD-475D24	N	WRD475C1	1.25
WRD580093-NF10	5.8-16.0	WRD-580D28	N	WRD580C1	1.25
WRD650093-NF10	6.5-18.0	WRD-650D28	N	WRD650C1	1.25
WRD750093-NF10	7.5-18.0	WRD-750D24	N	WRD750C1	1.25
WRD110093-KF20	11.0-26.5	WRD-110C24	K(female)	WRD110C1	1.25
WRD110093-KM20	11.0-26.5	WRD-110C24	K(Male)	WRD110C1	1.25
WRD180093-KF20	18.0-40.0	WRD-180C24	K(Female)	WRD180C1	1.25
WRD180093-KM20	18.0-40.0	WRD-180C24	K(Male)	WRD180C1	1.25

ORDERING INFORMATION

Model: Adaptor type suffix; Description

Example: Model WRD18093-KF20 Double Ridge Waveguide to K female coax adaptor

Series WRD093