



FLANN MICROWAVE

Flange to Flange Waveguide Straights, Adaptors and Spacers

Series 441 / 445

Manufactured in:

- Brass
- Copper
- Aluminium

The Flann Series 441/445 of Waveguide Straights and Flange to Flange Adaptors are available in waveguide bands from 1.14 GHz to 330 GHz.

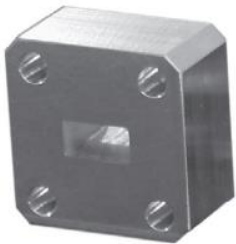


The overall length and flange types fitted at each end, must be specified at time of enquiry.

Note: Waveguide Straights are supplied fitted with Flann standard flanges unless otherwise specified by the customer. See page 111 for standard flange types and recommendations.

Customers requiring precision waveguide sections offering greater aperture and length dimensional accuracy are requested to refer to the Waveguide Calibration Kit section.

Model 22445-10



Model 22445-5

Waveguide Spacers

Model	Frequency Range (GHz)	Waveguide		
		WG	R	WR
16445	8.20 - 12.5	16	100	90
17445	9.84 - 15.0	17	120	75
18445	11.9 - 18.0	18	140	62
19445	14.5 - 22.0	19	180	51
20445	17.6 - 26.7	20	220	42
22445	26.4 - 40.1	22	320	28
23445	33.0 - 50.1	23	400	22
24445	39.3 - 59.7	24	500	19
25445	49.9 - 75.8	25	620	15
26445	60.5 - 92.0	26	740	12
27445	73.8 - 112	27	900	10
28445	92.3 - 140.0	28	1200	8
29445	114.0 - 173.0	29	1400	6
30445	145 - 220	30	1800	5
31445	172 - 261	31	2200	4
32445	217 - 330	32	2600	3

FLANN MICROWAVE LTD.

Dunmere Road
Bodmin
Cornwall
PL31 2QL

GET IN TOUCH:

Tel: +44 (0)1208 77777
sales@flann.com
www.flann.com



FLANN MICROWAVE

**Flange to Flange Waveguide Straights,
Adaptors and Spacers**

Series 441 / 445

Waveguide Straights and Flange to Flange Adaptors

Model	Frequency Range (GHz)	Waveguide		
		WG	R	WR
06441	1.14 - 1.73	6	14	650
08441	1.72 - 2.61	8	22	430
10441	2.60 - 3.95	10	32	284
11A441	3.22 - 4.90	11A	40	229
12441	3.94 - 5.99	12	48	187
13441	4.64 - 7.05	13	58	159
14441	5.38 - 8.18	14	70	137
15441	6.58 - 10.0	15	84	112
16441	8.20 - 12.5	16	100	90
17441	9.84 - 15.0	17	120	75
18441	11.9 - 18.0	18	140	62
19441	14.5 - 22.0	19	180	51
20441	17.6 - 26.7	20	220	42
22441	26.4 - 40.1	22	320	28
23441	33.0 - 50.1	23	400	22
24441	39.3 - 59.7	24	500	19
25441	49.9 - 75.8	25	620	15
26441	60.5 - 92.0	26	740	12
27441	73.8 - 112	27	900	10
28441	92.3 - 140.0	28	1200	8
29441	114.0 - 173.0	29	1400	6
30441	145 - 220	30	1800	5
31441	172 - 261	31	2200	4
32441	217 - 330	32	2600	3

ORDERING INFORMATION

STRAIGHTS & FLANGE TO FLANGE ADAPTORS - SERIES 441

Model - Length (mm) Input Flange : Output Flange

If the adaptor Spacer is required to be manufactured in aluminium please suffix the order information with \AL

Description Example: Model 22441-120-UG599/U. UBR 320

WG flange to flange Adaptor, 120 mm long, flange UG599/U. And PBR 320

ORDERING INFORMATION

Spacers - Series 445

Description Example: Model 22445-5-UG599/U

WG22 Spacer, 5 mm long, flange detail: UG.599/U

Series 441/445

Custom Design

Custom built instruments can be supplied; please contact the sales team for more information

sales@flann.com

FLANN MICROWAVE LTD.

Dunmere Road
Bodmin
Cornwall
PL31 2QL

GET IN TOUCH:

Tel: +44 (0)1208 77777
sales@flann.com
www.flann.com