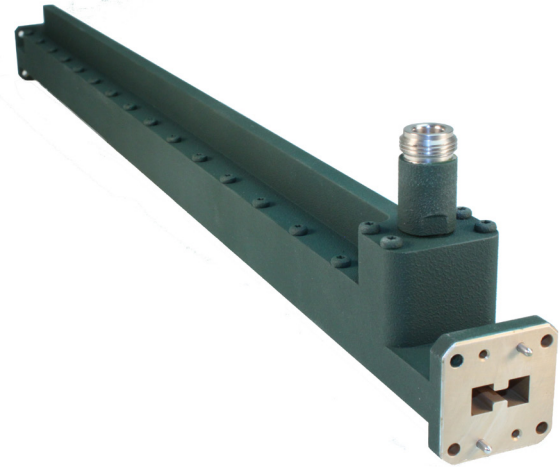




**Double Ridge Multihole Directional Coupler
Series 131/132**

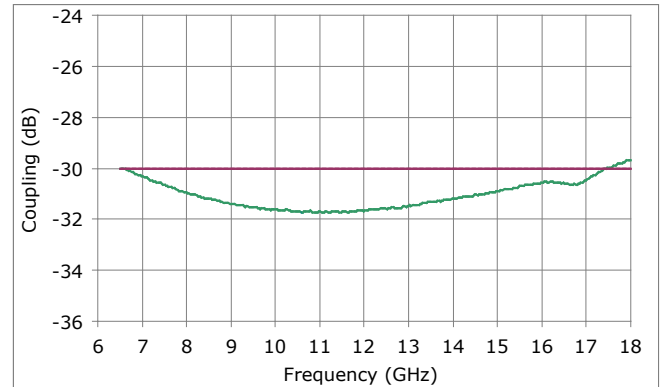
- **Models 2GHz to 40GHz**
- **40dB directivity over the full band**
- **Coupling sensitivity less than +/- 1.0dB**
- **Connector options available;**
Type N
SMA
K Type



Model: WRD750131-40-NF

Flann Double Ridge Couplers utilise optimum design and precision machining to achieve high directivity and flat coupling over the full designated waveguide band.

Please note the quoted Flann Specification applies to the whole designated Frequency Band and not part of the band as sometimes stated by some other manufacturers.



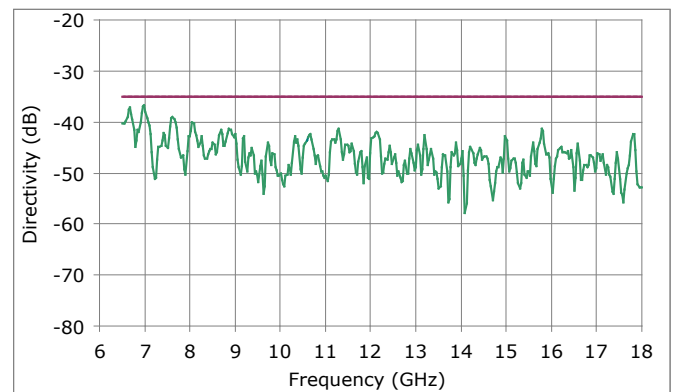
Typical Coupling for Model WRD650131-30-NF

Related Products

- Series
- 101: Double Ridge High Power Termination
 - 040: Precision Low Power Termination
 - 093: Double Ridge Right Angle WG to Coax Adapter
 - 373: Double Ridge End Launch WG to Coax Adapter

Custom Design

Custom built instruments can be supplied; please contact the sales team for more information.



Typical Directivity for Model WRD650131-30-NF

Ordering

Please specify the following:

WG Designation	Series	-	Coupling Value	-	Connector	Gender	Flange
WRD 200 - WRD180	131/132		10-50 dB		N: Type N S: SMA K: K Type*	F (Female) M (Male)	See flann.com

Example: WRD580132-20-NF. A WRD580 Double Ridge Directional Coupler. 5.8-16GHz, 40dB directivity

* K type connectors are only available on WRD110 and



Microwave Specifications

Waveguide Designation	Frequency Range (GHz)	Minimum Directivity dB		Coupling		VSWR (better than)	
		WRD 131	WRD 132	Sensitivity (\pm dB)	Nominal Accuracy (\pm dB)	Primary Arm	Secondary Arm
WRD200D24	2.0 - 4.8	35	40	1	0.8	1.06	1.35
WRD350D24	3.5 - 8.2	35	40	1	0.8	1.06	1.35
WRD475D24	4.75 - 11.0	35	40	1	0.8	1.06	1.35
WRD580D28	5.8 - 16.0	35	40	1	0.8	1.06	1.35
WRD650D28	6.5 - 18.0	35	40	1	0.8	1.06	1.35
WRD750D24	7.5 - 18.0	35	40	1	0.8	1.06	1.35
WRD110C24	11.0 - 26.5	32	35	1	0.8	1.1	1.35
WRD180C24	18.0 - 40.0	32	35	1	0.8	1.1	1.35

Mechanical Specifications

Standard base material: Aluminium with Alocrom 1200 surface treatment

Environmental Specifications

Operating ambient temperature: 5°C to 35°C

Non operating ambient temperature: 0°C to 55°C

Options

- Higher directivity models are available
- Ultra flat coupling
- Enhanced secondary arm VSWR
- Connector type (K, N, SMA, APC7)

FLANN MICROWAVE LTD.

Dunmere Road
Bodmin
Cornwall
UK, PL31 2QL

GET IN TOUCH.

Tel: +44 (0)1208 77777
sales@flann.com
www.flann.com