

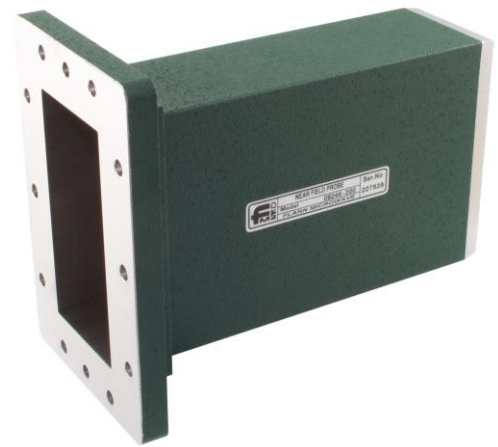


Features

- Low End Diffraction
- Models up to 330 GHz

Applications

- Planar and Cylindrical Near Field Measurements
- Calibration



Model 08246-200

Flann offer a complete range of small aperture open-ended near field waveguide probes designed specifically for planar and cylindrical near field measurements and calibration.

The end diffraction is minimised by utilising a 10° chamfer to give a knife edge aperture of less than 0.5 mm.

Standard probe lengths include 100 mm, 200 mm & 300 mm.

Custom lengths and flanges are available on request.

Typical Performance

- VSWR better than 2.5:1
- Gain 5.5 dB
- Gain variation ± 2 dB

ORDERING INFORMATION

Model: Description

Example: Model 18246 WG18 Near-field probe

Series 246

Custom Design

Custom built instruments can be supplied; Please contact the Sales Team for more information

sales@flann.com